

Specialist for new technology



*Robyn's  
Paint*

• [robynspaint.co.uk](http://robynspaint.co.uk) •

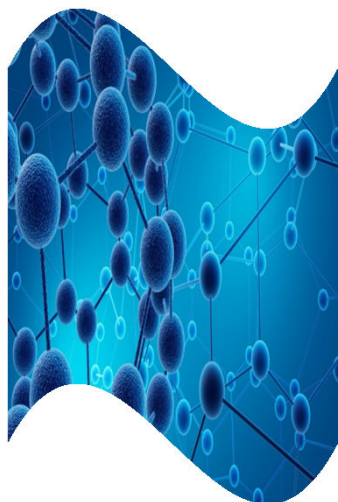
**Decorative Paints**  
**Exterior & Interior**

ISO 9001 / ISO 10002 / ISO 14001 / ISO 45001

We produce tomorrows technology, not todays



## **S-3535 UNIVERSAL / Pro** **Interior & Exterior Flat Paint / Satin**



**General Characteristics:** Water Based Pure Acrylic, silicon modified paint. It is used on all kinds of interior & exterior walls, concrete, gas concrete, brick, plaster and similar mineral surfaces.

- \* Four seasons excellent performance.
- \* Long-life nano technological structure.
- \* Maximum water repellency.
- \* Alkali and chemical resistance.
- \* Satin
- \* Odourless , Less VOC
- \* Breathable
- \* Washable
- \* Color never fades, Does not crack or flake away.
- \* Extra UV performance, excellent coverage and leveling.

**Consumption (L/m<sup>2</sup>) :** 1 L = 3,50- 4,00 m<sup>2</sup> / 1 US Gallon= 35-40 ft<sup>2</sup>  
(for 2 coats)

---

## **S-2505 ULTRA** **Nano Technology Exterior Paint / Semi Gloss**

**General Characteristics:** Nano technological structure, Pure Acrylic paint. It is used on all kinds of exterior walls, concrete, gas concrete, briquette, brick, plaster and similar mineral surfaces.

- \* Four seasons excellent performance.
- \* Long-life
- \* Maximum water repellency.
- \* Alkali and chemical resistance.
- \* Semi Gloss
- \* Odourless
- \* Breathable
- \* Washable / Easy clean up
- \* Color never fades, does not crack or flake away.
- \* Extra UV performance, excellent coverage and leveling.

**Consumption (L/m<sup>2</sup>) :** 1 L = 3,50- 4,00 m<sup>2</sup> / 1 US Gallon= 40-50 ft<sup>2</sup>  
(for 2 coats)



---

## **S-2510 LUX** **Silicon modified Acrylic Exterior Paint / Matte**

**General Characteristics:** Water based Silicon modified Acrylic paint. It is used on all kinds of exterior concrete, gas concrete, briquette, brick, plaster and similar mineral surfaces.

- \* Silicone modified product is water repellent and it is resistant to any atmospheric conditions for 4 seasons. Its life is much higher according to most standard paints.
- \* Maximum water repellency.
- \* Alkali and chemical resistance.
- \* Matte
- \* Odourless
- \* Breathable
- \* Color never fades, Does not crack or flake away.
- \* Extra UV performance, excellent coverage and leveling.

**Consumption (L/m<sup>2</sup>) :** 1 L = 3,50- 4,00 m<sup>2</sup> / 1 US Gallon= 40-50 ft<sup>2</sup>





## S-2512 EXTERIOR / ECO Economic Exterior Paint for Professional

**General Characteristics:** Water Based Latex paint.

It is used on all kinds of interior & exterior concrete, gas concrete, briquette, brick, plaster and similar mineral surfaces.

- \* Produced only White (color pigment can be used)
- \* Less Water repellency, ( recommend less rainy area)
- \* Good performance for professional use.
- \* Alkali resistance.
- \* Matte
- \* Odourless
- \* Breathable
- \* Does not crack or flake away.
- \* Good UV performance, coverage and leveling.

**Consumption (L/m<sup>2</sup>) :** 1 L = 3,50- 4,00 m<sup>2</sup> / 1 US Gallon= 35-40 ft<sup>2</sup>  
(for 2 coats)

## S-2560 FLEX / Flat Elastomeric Exterior Paint

**General Characteristics:** Water Based Elastomeric Acrylic, silicone modified Exterior Flat Paint.

It is used on all kinds of exterior concrete, gas concrete, briquette, brick, plaster and similar mineral surfaces.

- \* Elastomeric (300% elongation), does not crack or flake away.
- \* Four seasons excellent performance.
- \* Maximum water repellency.
- \* Alkali and chemical resistance.
- \* Matte
- \* Odourless
- \* Breathable
- \* Washable
- \* Color never fades, Does not crack or flake away.
- \* Extra UV performance, excellent coverage and leveling.

**Consumption (L/m<sup>2</sup>) :** 1 L = 3,50- 4,00 m<sup>2</sup> / 1 US Gallon= 35-40 ft<sup>2</sup>  
(for 2 coats)



## S-2570 FLEX / Textured Elastomeric Coating

**General Characteristics:** Water Based Elastomeric Acrylic, silicone modified Exterior Textured Coating.

It is used on all kinds of exterior concrete, gas concrete, briquette, brick, plaster and similar mineral surfaces.

- \* Elastomeric (300% elongation), does not crack or flake away
- \* Silicone modified product is water repellent and it is resistant to any atmospheric conditions for 4 seasons. Its life is much higher according to most standard paints.
- \* Long-life nano technological structure.
- \* Maximum water repellency.
- \* Alkali and chemical resistance.
- \* Matte
- \* Odourless
- \* Breathable
- \* Washable
- \* Color never fades, Does not crack or flake away.
- \* Extra UV performance, excellent coverage and leveling.

**Consumption (L/m<sup>2</sup>) :** 1 L = 1,50- 2.00 m<sup>2</sup> / 1 US Gallon= 17-22 ft<sup>2</sup>  
(for 1 coat)





## S-1520 Latex / LUX

### Acrylic Based Interior Paint / Matte



**General Characteristics:** Water Based Acrylic latex paint.  
It is used on all kinds of interior & exterior concrete, gas concrete, briquette, brick, plaster and similar mineral surfaces.

- \* Excellent performance for professional and homeowners
- \* Spatter resistant with easy clean-up
- \* Matte
- \* Odourless
- \* Breathable
- \* Does not crack or flake away.
- \* Excellent coverage and leveling.

**Consumption (L/m<sup>2</sup>) :** 1 L = 3,50- 4,00 m<sup>2</sup> / 1 US Gallon= 35-40 ft<sup>2</sup>  
(for 2 coats)

---

## S-1522 Latex / PRO

### Acrylic Based Interior Paint for Professional

**General Characteristics:** Water Based Latex paint.  
It is used on all kinds of interior & exterior concrete, gas concrete, briquette, brick, plaster and similar mineral surfaces.

- \* Produced only White (color pigment can be used)
- \* Good performance for professional use.
- \* Alkali resistance.
- \* Matte
- \* Odourless
- \* Breathable
- \* Does not crack or flake away.

**Consumption (L/m<sup>2</sup>) :** 1 L = 3,50- 4,00 m<sup>2</sup> / 1 US Gallon= 35-40 ft<sup>2</sup>  
(for 2 coats)



---

## S-1530 Satin / LUX

### Pure Acrylic Based Interior Paint / Semi Gloss



**General Characteristics:** Water based pure acrylic paint.  
It is used on all kinds of interior & exterior concrete, gas concrete, briquette, brick, plaster and similar mineral surfaces.

- \* Excellent performance for profesional and homeowners
- \* Long-life nano technological structure.
- \* Anti-bacterial
- \* Spatter resistant with easy clean-up
- \* Semi Gloss
- \* Odourless , less VOC
- \* Breathable
- \* Does not crack or flake away.
- \* Excellent coverage and levelling.

**Consumption (L/m<sup>2</sup>) :** 1 L = 3,75- 4,65 m<sup>2</sup> / 1 US Gallon= 40-50 ft<sup>2</sup>  
(for 2 coats)





## S-1535 Satin / PRO

### Pure Acrylic Based Interior Paint / Satin



**General Characteristics:** Water based pure acrylic paint.  
It is used on all kinds of interior & exterior concrete, gas concrete, briquette, brick, plaster and similar mineral surfaces.

- \* Good performance for professional and homeowners
- \* Anti-bacterial
- \* Spatter resistant with easy clean-up
- \* Satin
- \* Odourless , less VOC
- \* Breathable
- \* Does not crack or flake away.
- \* Good coverage and leveling.

**Consumption (L/m<sup>2</sup>) :** 1 L = 3,50- 4,00 m<sup>2</sup> / 1 US Gallon= 35-40 ft<sup>2</sup>  
(for 2 coats)

---

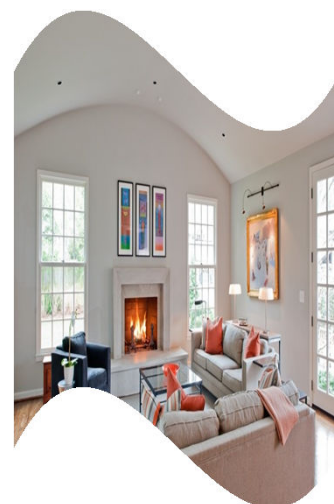
## S-1540 INTERIOR / ECO

### Economic Interior Paint for Professional

**General Characteristics:** Water Based Acrylic paint.  
It is used on all kinds of interior concrete, gas concrete, briquette, brick, plaster and similar mineral surfaces.

- \* Produced only White (color pigment can be used)
- \* Excellent performance for professional and homeowners
- \* Matte
- \* Odourless
- \* Breathable
- \* Does not crack or flake away.
- \* Good coverage and leveling.

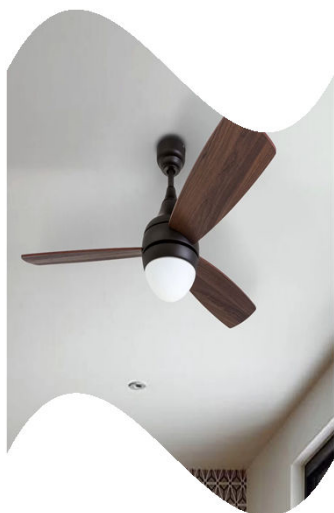
**Consumption (L/m<sup>2</sup>) :** 1 L = 3,50- 4,00 m<sup>2</sup> / 1 US Gallon= 35-40 ft<sup>2</sup>  
(for 2 coats)



---

## S-1545 CEILING PAINT

### Well Breathable



**General Characteristics:** Polyvinyl acetate (P.V.A.) based ceiling paint , used in places such as kitchen, bathroom where the vapour is very high.

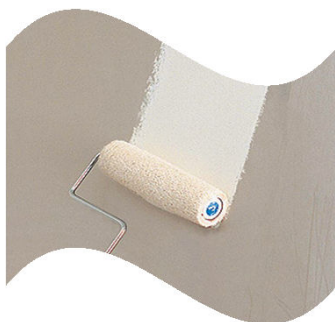
- \* Produced only White (color pigment can be used)
- \* Good performance for professional use.
- \* Matte
- \* Odourless
- \* Well Breathable
- \* Does not crack or flake away.
- \* Interior used.

**Consumption (L/m<sup>2</sup>) :** 1 L = 3,75- 4,65 m<sup>2</sup> / 1 US Gallon= 40-50 ft<sup>2</sup>  
(for 2 coats)



## S-1565 X - PRIMER

### Interior & Exterior Paints Filled Primer



**General Characteristics:** Water based, elastic primer.

It can be used as a primer under all kinds of exterior and interior paints

Used as an under-coat on old water based painted surfaces internally and externally

- \* Minimizes the consumption of filler paint.
- \* Produced only White (color pigment can be used)
- \* Strong adherence
- \* Never cracks and pours out.
- \* Its vapor diffusion (breathing) is high

**Consumption (L/m<sup>2</sup>) :** 1 L = 3,75- 4,65 m<sup>2</sup> / 1 US Gallon= 40-50 ft<sup>2</sup>  
(for 2 coats)

## S-1568 BINDER Primer

### Interior & Exterior Transparent Primer

**General Characteristics:** Pure acrylic based transparent primer.

When applied to old and new surfaces such as plaster, gross concrete, brick and chipboard etc. it prevents absorption by saturating the surface.

If used as an under-coat on old water based painted surfaces internally and externally it maintains the fitting; ensures the water based paint on which it will be applied is defect-free.

- \* White color before application, after drying, it takes on a transparent, bright appearance.
- \* Binder Primer is a necessary undercoating material for acrylic based paints.
- \* Water resistant and highly capable of adhesion to the surface.
- \* Never cracks and pours out.
- \* Its vapor diffusion (breathing) is high.
- \* Water resistant and reduces the use of topcoat paints.

**Consumption (L/m<sup>2</sup>) :** 1 L = 7 - 10 m<sup>2</sup> / 1 US Gallon= 80 -110 ft<sup>2</sup>  
(for 2 coats)



## Other Products

### Heat Insulation Coatings



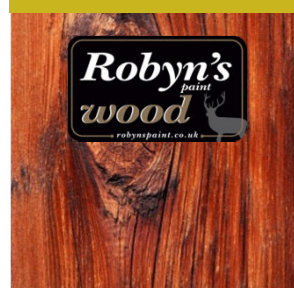
### Insulation & Special Paints



### Marine Paints Antifouling



### Wood Primers & Paints



Derin Boya ve Denizcilik San.Tic.Ltd. Şti - İstanbul / [www.derinboya.com](http://www.derinboya.com)



United Kingdom Office : Riverbank House 1 Putney Bridge SW6 3JJD – London / [www.robynspaint.uk](http://www.robynspaint.uk)

Europe Office : Hans Böckler Strasse. 40 40764 Langenfeld - Dusseldorf / [www.robynspaint.eu](http://www.robynspaint.eu)